

Quick Guide

MANUAL

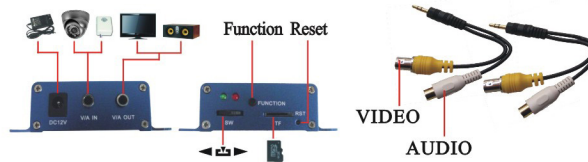
Quick Guide

Quick Tour 1

First, we'd like to thank you for choosing our product!
 This C-DVR include multiple functions, such as Continuous Video Recording, Motion detected Recording, Mixing Recording and Audio Recording. It is an ideal choose for the users with small size, powerful function, reasonable price and it is easy to install and operate.
 This product is applicable in different places, such as villas, dwelling houses, stores, hotels, small-markets, convenient stores, chain-stores, storehouse, offices, financial affair offices, BTS stations, etc.

We assure that our product has no phenomenon of deadlocks, store or cover failure on the core function.

I. Product image



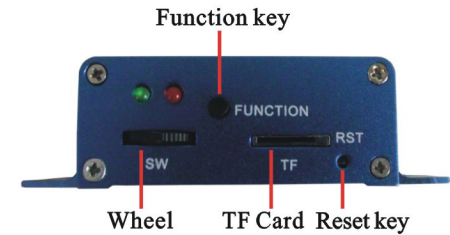
★ Before eject your TF card, please remember to press "Function Key" first and waiting for Red LED on.

★ Strongly advise that you check and format your TF card every 2-3 months.

II. This Product support 3 different Record Modes

1. Continuous Recording: mainframe will keep recording whether the picture changing or not changing. it is vital suitable using at some important sites. ("C" will be displayed on the right-top corner of screen)
2. Motion detected Recording: Continuous Recording will be activated only when picture start changing, and will be stopped automatically once this change finished. ("M" will be displayed on the right-top corner of screen)
3. Mixing Recording: Continuous video recording will be activated automatically once it captures any change in the monitored scene; when there isn't any change in scene the device will be only one picture per second. ("I" will be displayed on the right-top corner of screen)

Quick Tour 2



III. Specification of the indicator light and key

1. Specification of the indicator light
 - a. Green LED Flashing: No-Card or Card Error
Green LED On: Be with Card
 - b. Red LED Flashing: Video Recording
Red LED On: Stop Video Recording
 - c. Power connection with Card: Green LED and Red LED On, then Red LED Flashing and Green LED on
Power connection without Card: Green LED and Red LED On, then Red LED on and Green LED Flashing
 - d. Red LED and Green LED flashing in turn: Error, Card Ejected without press the "Function key"
2. Specification of the Function key
 - a. TF card can only be ejected after pressed this button and RED LED turn on; if card hasn't been ejected after 10 seconds, system will resume the video recording status.
 - b. Please press "Function Key" to pause the video recording before you carry on any operation. e.g. enter menu, eject TF card etc.
 - c. Please press "Function Key" continuously if you want to exit the menu according to order.
 - d. Under TV-OUT status, press "Function key" to start recording directly.
3. Reset Key: Press this button to re-start in case system broke-down.

Quick Tour 3

IV. How to use the wheel (SW)

1. Video Playback
 - 1) During recording status, press "Function Key" to pause the recording, then enter the "Video Playback" menu by "◀", the folder "RECORD" is displayed. Press "⏮" to enter sub-menu.
 - 2) Files in the sub-menu saved as, year:month:date:hour:minute:second, different suffix means different video recording file, "-Q-C/M/I" means QVGA standard continuous recording/motion detected recording/mixing recording files, "-C/M/I" means VGA standard continuous recording/motion detected recording/mixing recording files. By clicking "◀" "▶" keys to select file and press "⏮" to play.
 - 3) During video playing status, press "⏮" to pause the video and press "◀" or "▶" to select previous sector or next sector.
 - 4) The files in the TF card can be played back by computer (Windows Media Player) too.
2. System information

During recording status, press "Function Key" to pause the recording, then enter the "system information" by "⏮": time, Recording Definition, Recording Mode, TV mode and Copyright Information will be displayed.

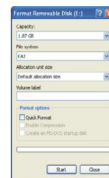
3. How to set up the system

- 1) During recording status, press "Function Key" to pause the recording, then enter the "system setting" menu by "▶" and click "◀" "▶" keys to select.
- 2) Language: press "⏮" to entry, by clicking "◀" or "▶" to select "Simple Chinese" or "English", then press "⏮" again to confirm.
- 3) Time Selection: press "⏮" to entry and continue pressing "⏮" to select "YEAR", "MONTH", "DAY", "HOUR", "MINUTE", "SECOND", and press "◀" or "▶" to adjust the time, when finishing it, press "Function Key" to exit. (when it is on the "SECOND", continue pressing "⏮" to exit too)
- 4) Recording Definition: press "⏮" to entry, by clicking "◀" or "▶" keys to select "VGA" (640*480) or "QVGA" (320*240), then press "⏮" again to confirm.
- 5) Recording Mode: Press "⏮" to entry, by clicking "◀" or "▶" keys to select "Continuous Recording", "Motion detected Recording" or "Mixing Recording", then press "⏮" again to confirm.
- 6) Exit: Press "⏮" to exit the settings menu.

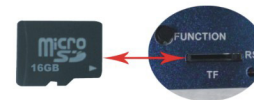
Quick Tour 4

NOTE:
 During "video playback", "system information" or "system configuring" status, press "Function Key" to exit the system. Under TV-OUT status, press "Function key" to start recording directly; or else if more than 10 seconds nobody touch the system, the Recording still will be active itself.

V. Usage method of new TF card



(Figure 1)



(Figure 2)

1. For the first use, you'd better insert TF Card into computer to format it. (Figure 1)
2. Insert TF Card into the mainframe. (Figure 2)
3. Please use wheel to select the suitable resolution and recording mode (Default resolution: QVGA; Video Mode: Continuous Recording). There are red words displayed on the right-top corner of screen.

VI. How to save your TF Card Memory Space

1. Set up the Resolution Ratio as QVGA model, which already been proved could meet the basic requirements during Ordinary CCTV.
2. Recording Model could be set up as Mixing Recording, extra memory space might be released when Motion detected recording will be set up.
3. It is necessary to set up the number of frames as 5 frame per second or less if you require more long video recording. (see the file "sepecial parameters" in your Random CD)

Quick Tour 5

VII. Product function parameter

Input	One channel video and one channel audio
Output	One channel video and one channel audio
Video Output Format	NTSC/PAL
Recording Function	Local storage/Loop video recording
Recording Mode	Continuous Recording, Motion detected Recording or Mixing Recording
Resolution	640x480(VGA)/320x240(QVGA)
Menu settings	Set by wheel (SW) on monitor
Menu Display	Chinese/English
Support (Storage)	TF Card (Support 32GB)
Power	Input: AC220/110V, Output: DC12V/1000mA

VIII. Suggestions of operation

1. Before eject your TF card, please remember to press "Function Key" first and waiting for Red LED on.
2. If customer wish to enter the Menu under VIDEO-IN status (the video status without any superimposed prompt), they have to press the "Function key" to entry the TV-OUT status first (the video status with some superimposed prompt, e.g. time) or else they wouldn't entry the Menu.
3. When you try to exit from different level menus or sub-menus, the response speed might be slightly delay (especially from Video Playback status --- "RECORD" exit to TV-OUT status), this is because the CPU has to close multiple processes at the same time, please be patient for extra couple of seconds.
4. System will exit to TV-OUT status automatically if more than 10 seconds nobody operates the menu.
5. Under TV-OUT status, press "Function key" to start recording directly; or else if more than 10 seconds nobody touch the system, the Recording still will be active itself.
6. Please don't plug in or eject your TF card during working status although the HOT-PLUG is supported.
 Notice: Strongly Advice disconnect the power first and then plug in or eject the TF Card.
7. If the system cannot upload the TF card after trying many times which means invalid track might be involved, under such circumstances, please format this TF card by using the Format Software "SDFormatter" which you can find in your Random CD. Please change the new TF card if the method is invalid.